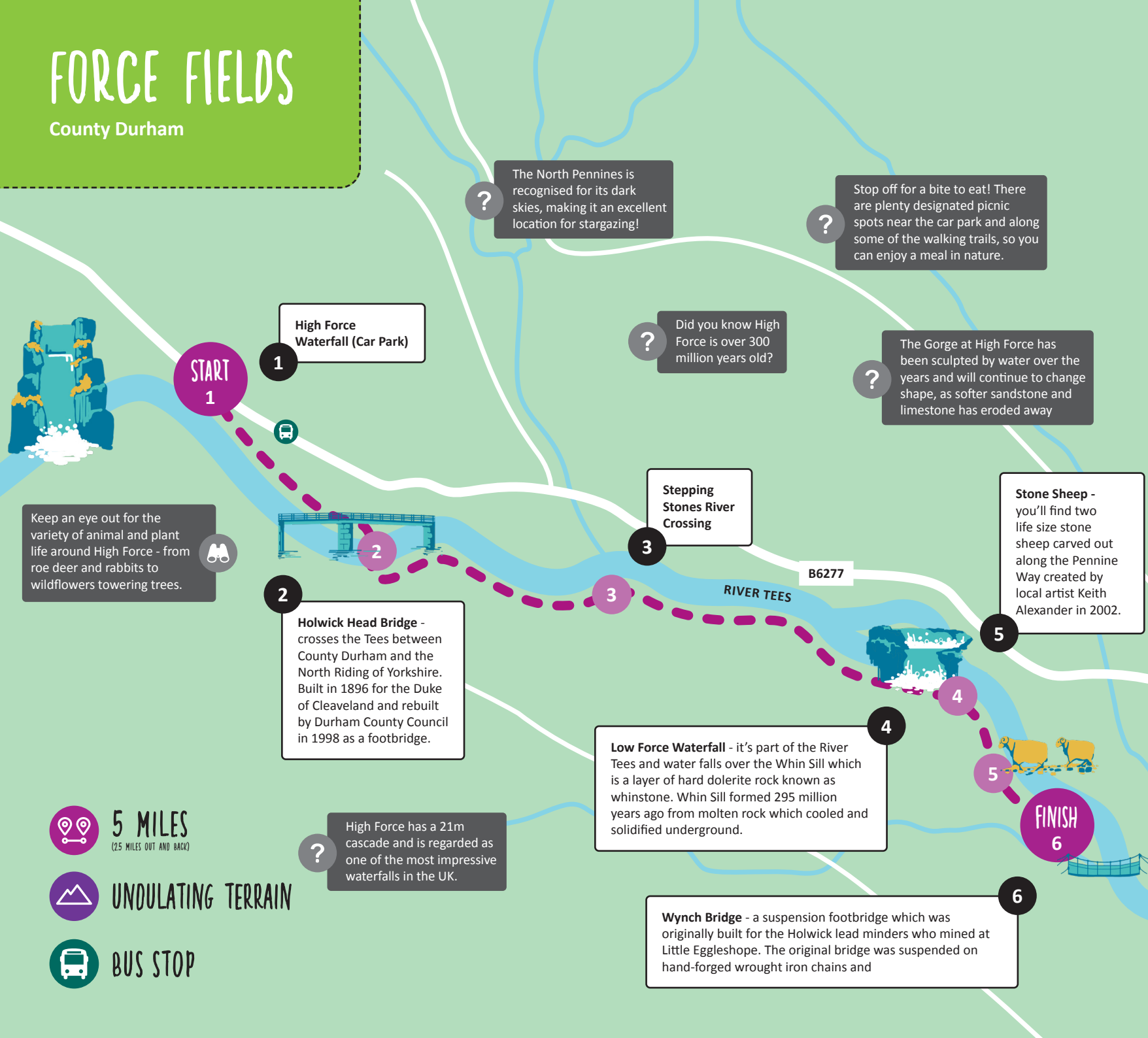


FORCE FIELDS

County Durham



START
1

High Force
Waterfall (Car Park)

1

Keep an eye out for the variety of animal and plant life around High Force - from roe deer and rabbits to wildflowers towering trees.



2

Holwick Head Bridge - crosses the Tees between County Durham and the North Riding of Yorkshire. Built in 1896 for the Duke of Cleveland and rebuilt by Durham County Council in 1998 as a footbridge.

?

The North Pennines is recognised for its dark skies, making it an excellent location for stargazing!

?

Did you know High Force is over 300 million years old?

?

Stop off for a bite to eat! There are plenty designated picnic spots near the car park and along some of the walking trails, so you can enjoy a meal in nature.

?

The Gorge at High Force has been sculpted by water over the years and will continue to change shape, as softer sandstone and limestone has eroded away

Stepping
Stones River
Crossing

3

B6277

RIVER TEES

Stone Sheep - you'll find two life size stone sheep carved out along the Pennine Way created by local artist Keith Alexander in 2002.

5

4

Low Force Waterfall - it's part of the River Tees and water falls over the Whin Sill which is a layer of hard dolerite rock known as whinstone. Whin Sill formed 295 million years ago from molten rock which cooled and solidified underground.

FINISH
6

6

Wynch Bridge - a suspension footbridge which was originally built for the Holwick lead miners who mined at Little Egglestone. The original bridge was suspended on hand-forged wrought iron chains and

Located at the heart of the Durham Dales, you can explore Low Force as it tumbles over the whin sill - formed 295 million years ago.

This route allows you to take in fresh air and picturesque scenery from across the Dales, as well as meeting two life-sized stone sheep along the Pennine Way.

1. High Force Waterfall (Car Park)
2. Holwick Head Bridge
3. Stepping Stones River Crossing
4. Low Force Waterfall
5. Stone Sheep
6. Wynch Bridge

HOW TO GET TO THE START

Visit livemap.nexus.org.uk and enter the postcode DL12 0XH.

SUITABILITY



Full
route



Full
route

Sections of this route are challenging with uneven terrain. Wheeled pedestrian and pushchair accessibility cannot be guaranteed.

To request a larger print or alternative format of the days out guides, please email info@gosmartergoactive.co.uk



5 MILES
(2.5 MILES OUT AND BACK)



UNDULATING TERRAIN



BUS STOP

**GoSmarter
GoActive**

www.gosmartergoactive.co.uk