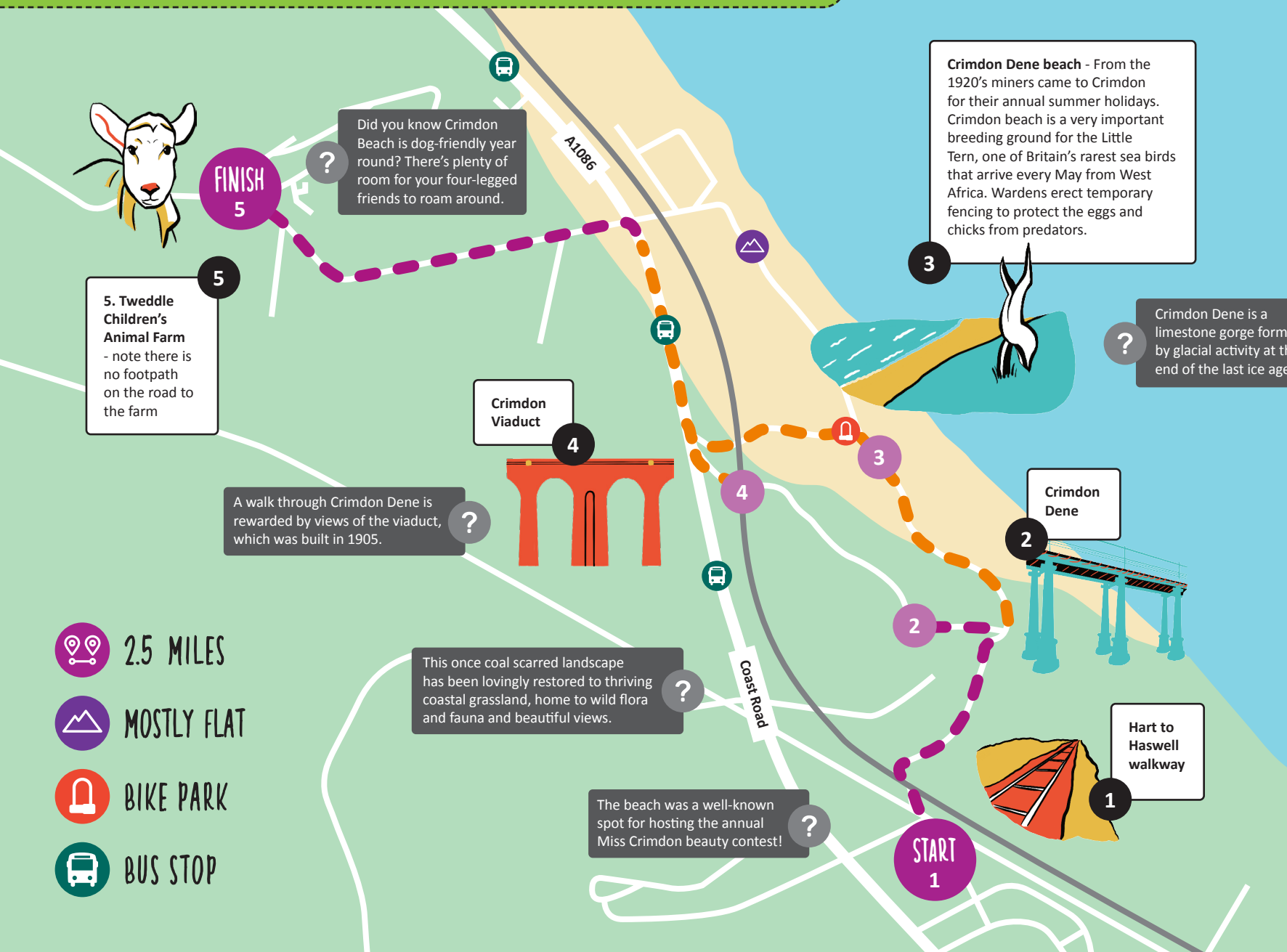


CRIMDON BEACH: THE MINER'S LAMP

County Durham



Home to one of Britain's rarest sea birds, Crimdon beach has long been a hive of local activity - and has been since the 1920's!

One a favourite holiday getaway for Miners from across the North East, it today remains the perfect spot for a walk with the whole family.

1. Hart to Haswell walkway
2. Crimdon Dene
3. Crimdon Dene beach
4. Crimdon Viaduct
5. Tweddle Children's Animal Farm

HOW TO GET TO THE START

Visit livemap.nexus.org.uk and enter the postcode **TS24 9RQ**.

SUITABILITY



--- Accessible section

Sections of this route are challenging with uneven terrain. Wheeled pedestrian and pushchair accessibility cannot be guaranteed.

To request a larger print or alternative format of the days out guides, please email info@gosmartergoactive.co.uk

**GoSmarter
GoActive**

www.gosmartergoactive.co.uk