

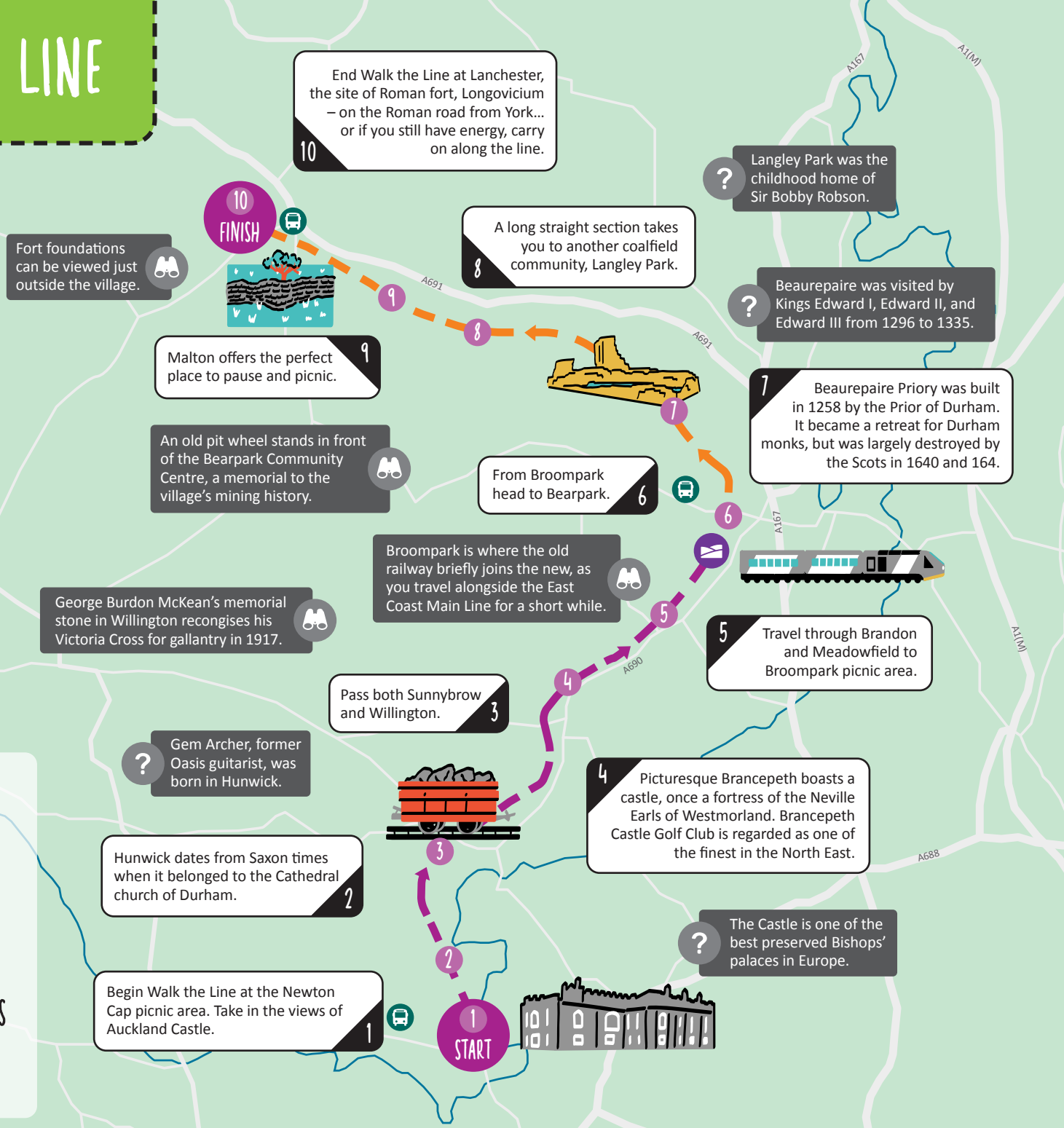


WALK THE LINE

County Durham

-  17.5 MILES
-  6.5 MILES
-  MOSTLY FLAT,
SOME HILLS,
UNEVEN PATHS
-  BUS STOP



Part of an extensive network of railway paths, Walk the Line covers a long section ideal for walkers and cyclists.

On this route, the Bishop-Auckland to Brandon line links with the Lanchester Valley route at Broompark.

The line used to carry iron ore to Consett Steelworks and coal from Langley Park, but they now provide a fantastic, picturesque route for lovers of the great outdoors.





THE ROUTE

- | | |
|-----------------------------|------------------------------|
| 1. Start at the Cap | 7. A place to reflect |
| 2. Pass by Hunwick | 8. Into the countryside |
| 3. Sunnybrow/Willington Way | 9. Perfect place to picnic |
| 4. Brancepeth bound | 10. Roman around the village |
| 5. Old joins the new! | |
| 6. Grin and Bearpark | |

HOW TO GET TO THE START

Visit livemap.nexus.org.uk and enter the postcode DL14 7SF.

SUITABILITY

			
Full route	Full route	Partial route	Partial route

Suitable for wheeled pedestrians

**GoSmarter
GoActive**

www.gosmartergoactive.co.uk