

PENSHAW POINT TO POINT

Sunderland

 3 MILES

 2.6 MILES

 MOSTLY FLAT, MILD RISES, GOOD PATHS

 BUS STOP

In the shadow of Penshaw Monument, Herrington Country Park is a magnet for families looking for outdoor summer fun.

The park was built on the site of a former colliery and has become a thriving hub for local wildlife, with over 100 species of birds.

The Penshaw Point to Point is a circular route that offers the opportunity for walkers to test their stamina and warm up with a visit to the Monument itself.





THE ROUTE

1. Temple on the hill
2. Park and glide
3. She's like the wind
4. Shakespeare in the Park
5. Sitting in the rain
6. The hot seat
7. Just chill
8. Roll-up

HOW TO GET TO THE START

Visit livemap.nexus.org.uk and enter the postcode DH4 7NJ.

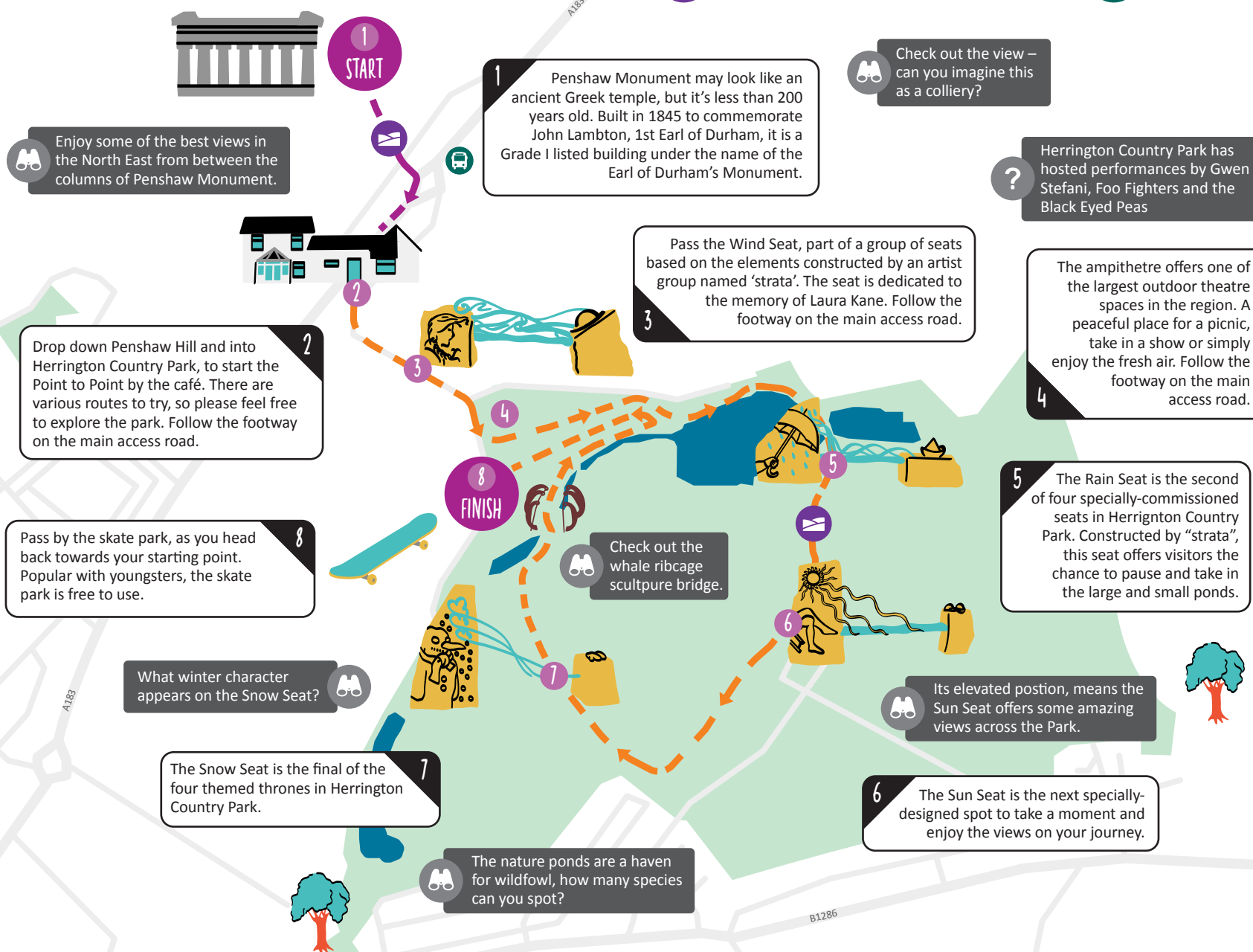
SUITABILITY

			
Full route	Partial route	Partial route	Partial route

Suitable for wheeled pedestrians and cyclists


**GoSmarter
GoActive**

www.gosmartergoactive.co.uk



1 START

1 Penshaw Monument may look like an ancient Greek temple, but it's less than 200 years old. Built in 1845 to commemorate John Lambton, 1st Earl of Durham, it is a Grade I listed building under the name of the Earl of Durham's Monument.

 Check out the view – can you imagine this as a colliery?

? Herrington Country Park has hosted performances by Gwen Stefani, Foo Fighters and the Black Eyed Peas

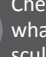
3 Pass the Wind Seat, part of a group of seats based on the elements constructed by an artist group named 'strata'. The seat is dedicated to the memory of Laura Kane. Follow the footway on the main access road.


4 The amphitheatre offers one of the largest outdoor theatre spaces in the region. A peaceful place for a picnic, take in a show or simply enjoy the fresh air. Follow the footway on the main access road.


2 Drop down Penshaw Hill and into Herrington Country Park, to start the Point to Point by the café. There are various routes to try, so please feel free to explore the park. Follow the footway on the main access road.

5 The Rain Seat is the second of four specially-commissioned seats in Herrington Country Park. Constructed by "strata", this seat offers visitors the chance to pause and take in the large and small ponds.

8 Pass by the skate park, as you head back towards your starting point. Popular with youngsters, the skate park is free to use.


 Check out the whale ribcage sculpture bridge.

 What winter character appears on the Snow Seat?

 Its elevated position, means the Sun Seat offers some amazing views across the Park.

7 The Snow Seat is the final of the four themed thrones in Herrington Country Park.

6 The Sun Seat is the next specially-designed spot to take a moment and enjoy the views on your journey.

 The nature ponds are a haven for wildfowl, how many species can you spot?