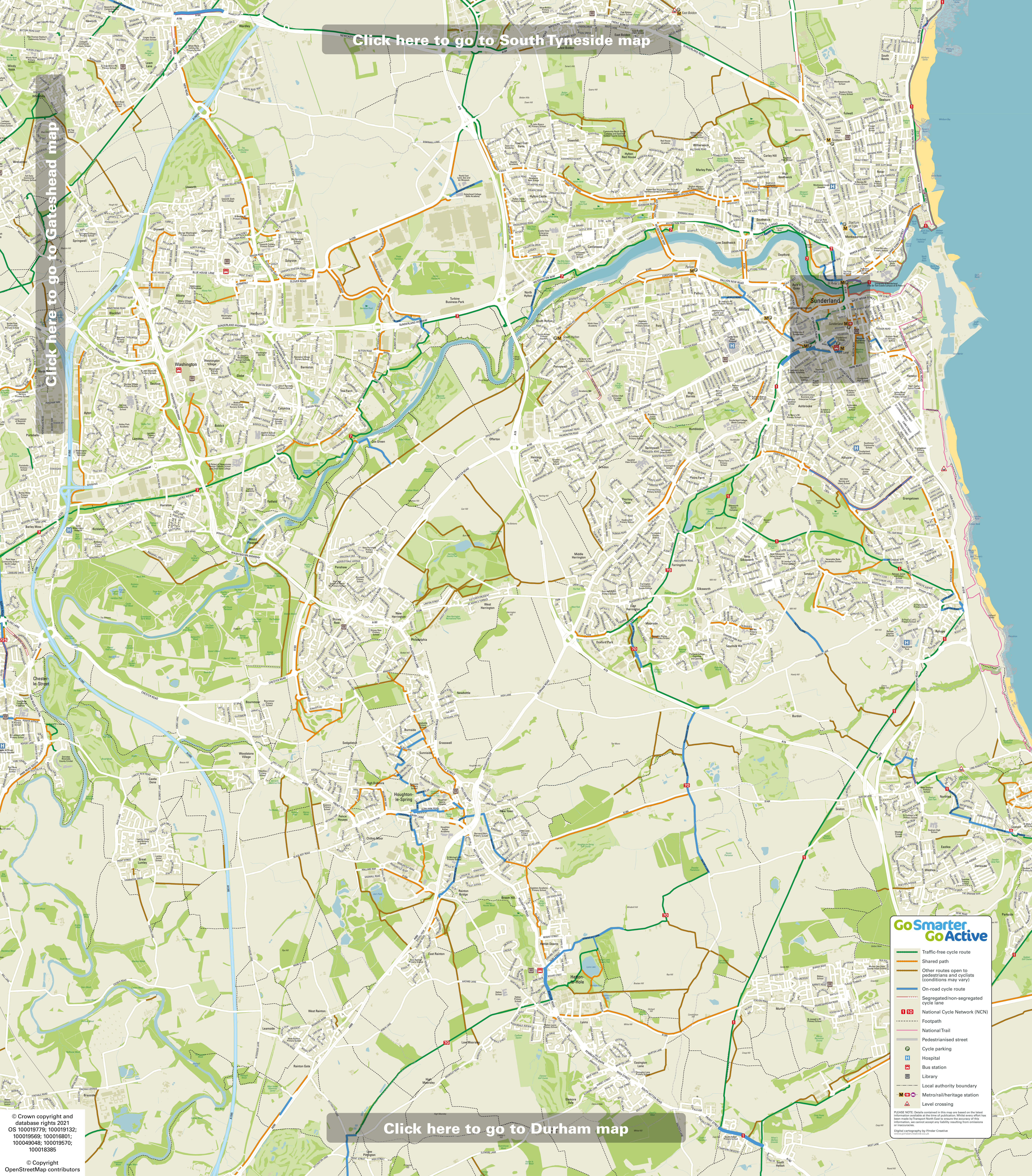


[Click here to go to South Tyneside map](#)

[Click here to go to Gateshead map](#)



[Click here to go to Durham map](#)

**GoSmarter
GoActive**

- Traffic-free cycle route
- Shared path
- Other routes open to pedestrians and cyclists (conditions may vary)
- On-road cycle route
- Segregated/non-segregated cycle lane
- National Cycle Network (NCN)
- Footpath
- National Trail
- Pedestrianised street
- Cycle parking
- Hospital
- Bus station
- Library
- Local authority boundary
- Metro/rail/heritage station
- Level crossing

PLEASE NOTE: Details contained on this map are based on the latest information available at the time of publication. Whilst every effort has been made by Transport North East to ensure the accuracy of this information, we cannot accept any liability resulting from omissions or inaccuracies.
Digital cartography by Pindar Creative
www.pindarcreative.co.uk